



SHALOM PRIMARY SCHOOL

P7 SCIENCE TERM II 2020, SET VII REVISION WORK.

SECTION A:

1. Write any one source of light that uses paraffin as fuel.

.....

2. Why would you group a duck and a goose in the same group of birds?

.....

3. In the space provided below, draw molecules as they appear in solids.

4. Which component of the environment is a habitat for fish and frogs?

.....

5. State the function on root tubers to a cassava plant.

.....

6. Draw and show the effect of heat on the water in the open container.



7. Identify one example of a group of simple machines.

.....

8. Which of these two body organs is used for breathing: a nose, lungs?

.....

9. Suggest any one activity a person could do to keep good health of the alimentary organs.

.....

10. Mention any one thing we use to clean hair.
.....
11. In which way is cockroach similar to a housefly as vectors?
.....
12. Suggest any one thing local leaders could do to reduce on road accidents on busy roads.
.....
13. Suggest one activity carried out to save a person who has taken rat poison.
.....
14. State any one danger of living in a room with an active smoker.
.....
15. Mention the cattle parasite that spreads East Coast Fever.
.....
16. Write the element of PHC practiced when a person feeds on a balanced diet.
.....
17. Name any one member of a family who could properly teach babies between 2 — 4 years of age.
.....
18. How do we care for our bones in the body?
.....
19. Which gametes in the human reproductive system work in the same way as pollen grains in a flower?
.....
20. Identify the form of energy a dry cell contains when it has just been manufactured.
.....
21. Give a reason why ‘plants are renewable resources.
.....
22. Mention any common pest of banana crops.
.....
23. What first aid would you give to a fainted casualty?
.....
24. Name one disease of the digestive system.
.....

25. Write the similarity in function between part marked R on the diagram of an insect with the human lungs.



-
26. How would you protect a house in a home against strong winds?
-
27. Write any one activity a person does to control the spread of trachoma.
-
28. In one sentence give one activity carried out to improve on soil fertility.
-
29. List one social problem that affects the health of adolescents.
-
30. Define the word “food path”.
-
31. Mention the name of the thigh bone.
-
32. How do first class levers make work easy?
-
33. Mass is the amount of matter in an object. Give the standard units used in measuring Mass.
-

The diagram shows part of the digestive system. Study it and answer question 34.



34. Outline the use of part marked O during food digestion.
-

35. Where in the respiratory system is air moistened warmed before it goes to the lungs?

.....

36. Apart from death, identify any other effect caused by road accidents on a person.

.....

37, Name the part of the circulatory system shown in the diagram below.



.....

38. Identify the lens that can be used to correct short sightedness.

.....

39. How does the electrical method differ from stroking method while making a magnet?

.....

40. State one activity done by a poultry farmer to control vices among birds.

.....

Section B

41(a) Name the opposing force that works between to moving surfaces.

.....

(b) Write two forms o0f energy produced by the force named ;n (a) above.

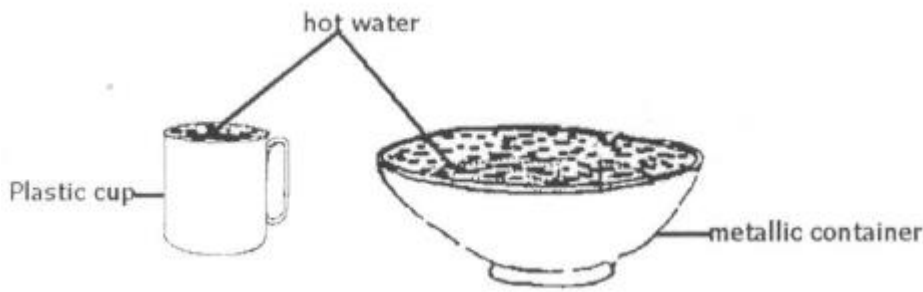
.....

.....

(c) By use of an arrow, indicate the structures on the sports shoes that increase friction as s person putting on the shoes is walking.



42. The diagram below shows two cooling containers. Container A is a plastic and container B is metallic.



- (a) Which container cools the water faster?
.....
- (b) Give a reason to support your answer in (a) above.
.....
- (c) Identify the process that enables water to cool down.
.....
- (d) Name any natural change where the process name in (C) above takes place.
.....

- 43(a) What is personal hygiene?
.....
.....
- (b) Write two activities a person carries out to keep clothes clean.
.....
.....
- (c) Suggest any one danger of not keeping clothes clean.
.....

44. Match the following items correctly.

PART FOOD DIGESTED

Mouth milk sugars

Duodenum cooked starch

Stomach fats

Lactose proteins

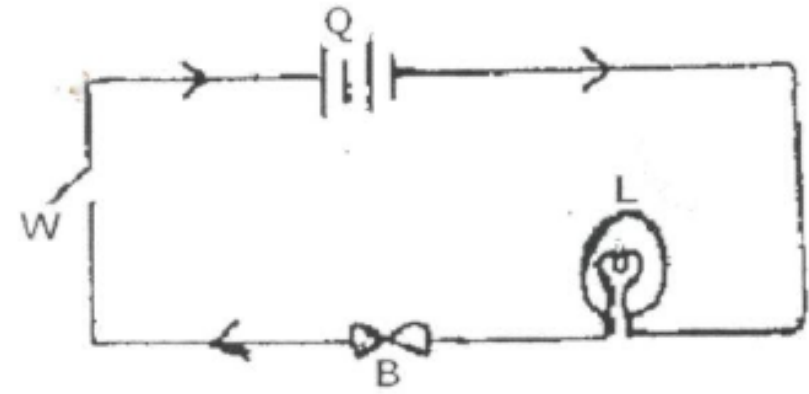
45. The diagram below shows two root systems. Study them carefully and answer the following questions.



- (a) Identify the root systems labeled with letters K and L.
.....
- (b) Write two uses of roots to plants.
.....

46(a) Give two domestic appliances that use both electricity and magnets.
.....

The diagram below shows a simple electric circuit. Use it to answer the questions that follow.



- (b) Name part marked B.
.....
- (C) What is the voltage in the simple electric circuit shown above?
.....

47(a) Define the term skeleton.
.....
.....

- (b) Write any two functions of a human skeleton.
.....
.....

(C) In which is a skeleton in a goat different from that of a bee?
.....

48(a) Write any three types of chicken reared in Uganda.
.....
.....

.....
(b) List any one product obtained from poltry.
.....
49(a) What name is given to the diseases we due to poor feeding?
.....
(b) Give two examples of such diseases as mentioned in (a) above.
.....
.....
(c) Suggest one way of preventing such diseases.
.....
50(a) List any two common types of changes in the environment.
.....
.....
(b) To which type of change does rusting belong?
.....
Cc) What piece of advice would you give to people to control rusting in metallic tools?
.....
5 1(a) Mention any one example of energy resources.
.....
(b) Why is the item you have given in (a) above called an energy resource?
.....
(c) Mention one form of energy obtained from the above energy resource.
.....
(d) Suggest the best way of handling energy resources that are non-renewable.
.....
52(a) Give any two examples of diseases spread by mosquitoes.
.....
.....
(b) Mention the cause of one of the diseases you have named in (a) above.
.....
(c) How would you control the spread of such diseases without polluting the environment?
.....
53(a) Identify the sounds made by the following animals:
(i) duck
.....
(ii) dog
.....

(b) Give one device used to produce sound.

(c) Give one example of a local stringed instrument.

54(a) List two body organs which work together to make proper circulation of blood and oxygen in the body.

(b) Give the role of each of the organs you have named in (a) above in blood circulation:

55(a) Identify any two requirements for starting a livestock farm.

(b) Give any two advantages of keeping records on a farm.

END

SHALOM PRIMARY SCHOOL SCIENCE TERM II 2020, SET VIII REVISION WORK.

SECTION A:

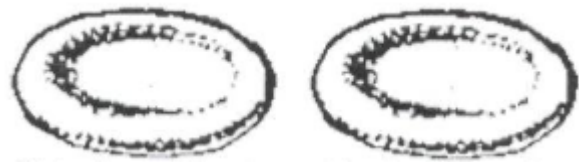
- 1. Name the body organ that detects the smell of good food.
.....
- 2. Why is it dangerous to touch uninsulated electric wires?
.....
- 3. Apart from discs and memory cards, name other device that can be used to store sound.
.....
- 4. Identify one activity of man that leads to misuse of wetlands.
.....
- 5. Of what use is a crop in the digestive process of birds?
.....
- 6. What force is used to sharpen tools?
.....
- 7. What property of magnetism is illustrated below?



- 8. Oxygen is one of the components of air. How can it be a danger to man?
.....
- 9. How is the process of decomposition (decay) useful to farmers?
.....
- 10. Mention one item used in keeping the human body clean.
.....
- 11. Why is a blanket able to keep a person warm at night?
.....
- 12. How does polio affect the skeletal system?
.....
- 13. Mention one factor that leads to food poisoning.
.....

14. Mosses are plants and mushrooms are fungi. How are mosses and mushrooms similar?

.....
15. State the use of the blood cells shown in the diagram below.



.....
16. State the method used to find the volume of a papaw.

.....
17. Write down one exotic beef breed of cattle.

.....
18. Give one importance of a child health card to parents.

.....
19. In which way are regular physical exercises important to the body?

.....
20. State the element of PHC that controls population growth.

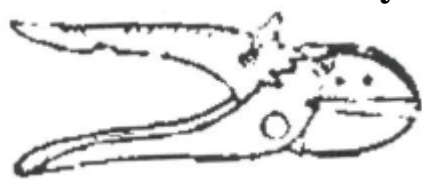
.....
21. Which pest can be controlled using traps?

.....
22. Give one health need of a pregnant woman.

.....
23. Why should every family have enough food?

.....
24. What makes the skin a storage organ?

.....
25. Mention the activity farmers carry out using the tool below.



.....
26. Give the vector that breeds in rubbish heaps.

.....
27. State the danger of sharing drugs meant for one patient.

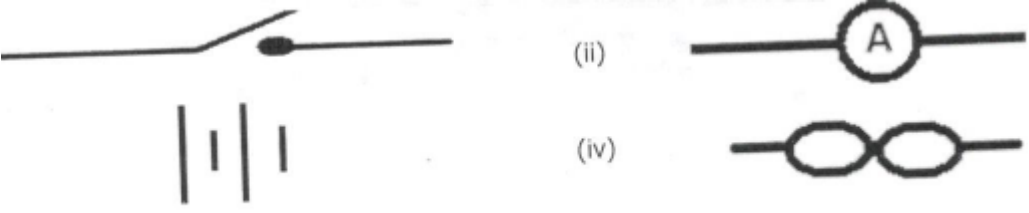
.....
28. Write one living component of the environment.

.....

29. State one health benefit of cooking food.
.....
30. Apart from filtration, identify one other way of making dirty water clean.
.....
31. Which sexually transmitted disease affects eyes?
.....
32. What happens when light rays meet a transparent material?
.....
33. Where does re-absorption of useful materials take place in the kidney?
.....
34. how is a sperm cell in human beings similar to pollen grains in plants?
.....
35. Give one advantage of the paddock system in cattle keeping.
.....
36. Why is a latrine important in a home?
.....
37. Name the disorder that affects the digestive system due to lack of teeth.
.....
38. Write down one cause of violence in a home.
.....
39. How do trees clean the environment?
.....
40. Name one group of living things.
.....

SECTION B

41. The diagram shows symbols representing parts of an electric circuit.



- (a) Identify the parts shown by symbols (i) and (ii).
.....
- (b) State the form of energy stored in the part represented by symbol (iii).
.....
- Cc) Give the function of the part represented by symbol marked (iv).
.....
- 42(a) Name two energy resources got from water.
.....

(b) How are the above mentioned resources friendly to the environment?
.....

43(a) Outline the two types of immunity.
.....

(b) What immunisable disease is a water borne disease?
.....
.....

(c) Why is getting immunity after a long illness not a good method?
.....
.....

44(a) Explain the following terms in crop growing:

(i) thinning
.....

(ii) weeding
.....

(b) Give two advantages of mulching.
.....
.....

45(a) How does a human body allow movement?
.....

(b) Name the type of joint found in the cranium of the skull.
.....

(c) Write down two ways of keeping the skeletal system in a good working condition.
.....
.....

46. A village chief uses a drum to call people for community work.

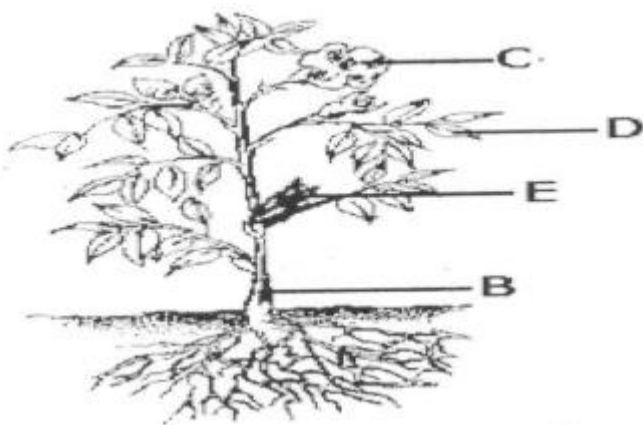
(a) How does the sound from the drum reach people?
.....

(b) How does the drum produce sound?
.....

(c) Apart from the drum, name any other percussion instrument.
.....

(d) How can a person playing a drum producing sound of different pitch?
.....

47. The diagram below is of a plant. Use it to answer the questions that follow.



(a) Of what importance is part C to a plant?

.....

(b) Name the parts labeled B and E.

.....

(c) Apart from photosynthesis, give any other process that takes place in part D.

.....

48(a) Kagolo earns money from charcoal burning. In which two ways is this activity bad to the environment?

.....

(b) Suggest two ways charcoal use can be reduced.

.....

.....

49. The data shows information collected from two homes of Kato and Wasswa.

K a t o ' s h o m e	W a s s w a ' s h o m e
H a s a l a t r i n e	U s e b u s h f o r d e f e c t i o n
H a s a p l a t e r a c k	H a s a p l a c e r a c k
B o i l s w a t e r f o r d r i n k i n g	B o i l s w a t e r f o r d r i n k i n g
H a s a c l e a n a w e l l m a i n t a i n e d c o m p o u n d	H a s a d i r t y a n d b u s y c o m p o u n d.

(a) Which of the homes is likely to have health problems?

.....

(b) Identify the two things likely to affect health in the home named in (a) above.

.....

(c) Mention one disease likely to affect people living in the home you have named in (a) above.

.....

50(a) Under what condition may a magnet lose its magnetism?

.....

(b) Give two ways how magnets are important in our everyday life.

.....
.....

5 1(a) State two factors that can lead one to smoke.

.....
.....

b) Give one poisonous substance found in tobacco smoke.

.....

c) Name the crop from which cigarettes are made.

.....

52. a) What is mechanical advantage in relation to machines?

.....

b) Under what group of machines is a nut cracker?

.....

c) Name one force that affects the efficiency of a machine.

.....

d) Draw a wedge in the space provided below.

53. Match the organs with their functions.

kidney

liver

brain

pancreas

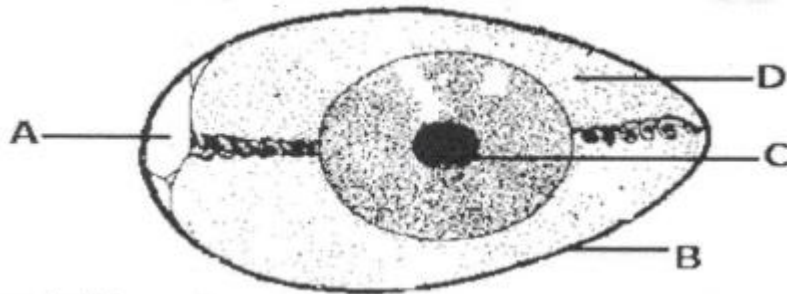
produces insulin

stores information

filters harmful products from blood

produces heat in the bod

54. Use the diagram of an egg given below to answer the questions that follows.



a) Name the part marked C.

.....
.....

b) Give the functions of parts A and D.

.....
.....

c) Why is part B porous?

.....
.....

55 a) Identify two natural sources of light.

.....
.....

How is light useful to plants?

.....
.....

Why can't people see around corners?

.....
.....

